

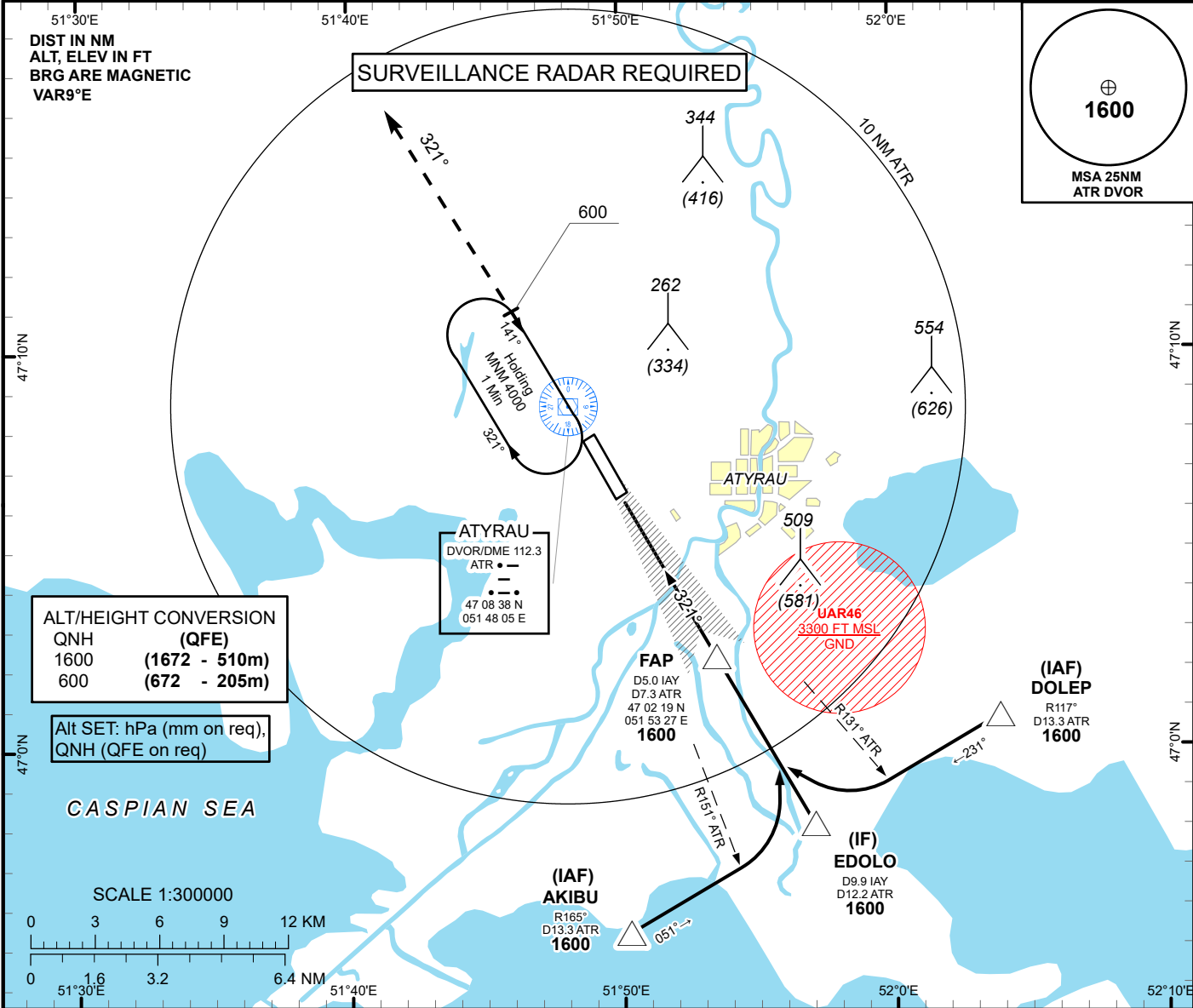
INSTRUMENT
APPROACH
CHART - ICAO

AERODROME ELEV -72 FT
HEIGHTS RELATED TO
THR RWY 32 - ELEV -72 FT

ILS/DME
LLZ 108.3
IAW 20X
GP 334.1
CH 20X

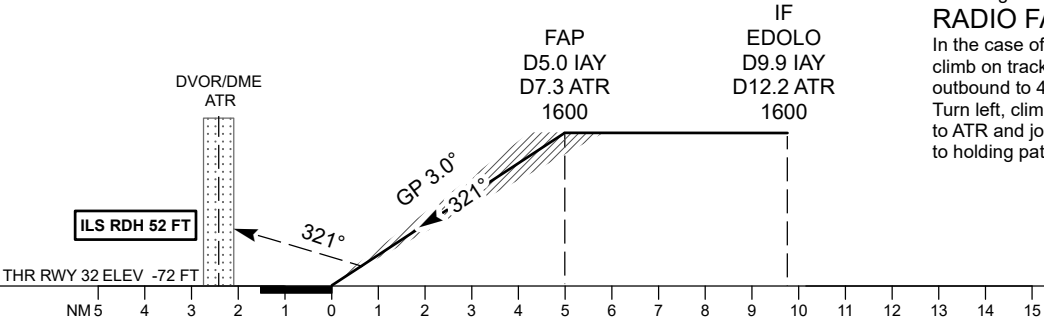
ATYRAU TOWER 118.1
ATYRAU ATIS (EN) 127.4
ATYRAU ATIS (RU) 126.6

ATYRAU
ILS/DME
RWY 32



TRANSITION ALT
10000

MISSED APPROACH
Climb on track 321° to 1600.
After passing 600 radar
vectoring will be provided.
RADIO FAILURE
In the case of RCF
climb on track 321° to 1600
outbound to 4.4 ATR.
Turn left, climb to 4000
to ATR and join
to holding pattern.



CHANGE: Missed approach.

Aircraft Category		A	B	C	D	DIST to THR DME IAY	NM	1	2	3	4	5	
Straight-in Approach OCA/H						DME ATR	NM	3.3	4.3	5.3	6.3	7.3	
	CAT I	138(210)	138(210)	138(210)	138(210)	ALTITUDE	FT	299	620	943	1267	1600	
						HEIGHT	FT	(371)	(692)	(1015)	(1339)	(1672)	
Aerodrome Operating Minima DH ft x RVR (CMV)	CAT I					DME IAY ZERO RANGED TO THR RWY 32							
						GS	Kt	80	100	120	140	160	180
						Desc.Rate(5.2%)	ft/min	420	530	630	740	840	950

ATYRAU
ILS/DME CAT I

AERONAUTICAL DATA TABULATION

ILS approach to RWY32 from AKIBU, EDOLO, DOLEP	
Fix/point	Coordinates
ATR DVOR/DME	47° 08' 38.2"N 051° 48' 05.4"E
(FAP) IAY D5.0, ATR D7.3	47° 02' 19.3"N 051° 53' 26.6"E
EDOLO (IF) D12.2 ATR	46° 58' 04.5"N 051° 57' 01.8"E
AKIBU (IAF) R165°ATR, D13.3ATR	46° 55' 21.9"N 051° 50' 12.8"E
DOLEP (IAF) R117°ATR, D13.3ATR	47° 00' 46.8"N 052° 03' 51.6"E
THR RWY 32	47° 06' 37.41"N 051° 49' 48.05"E
IAY LOC	47° 08' 20.0"N 051° 48' 20.9"E